

CITY OF GRAND PRAIRIE

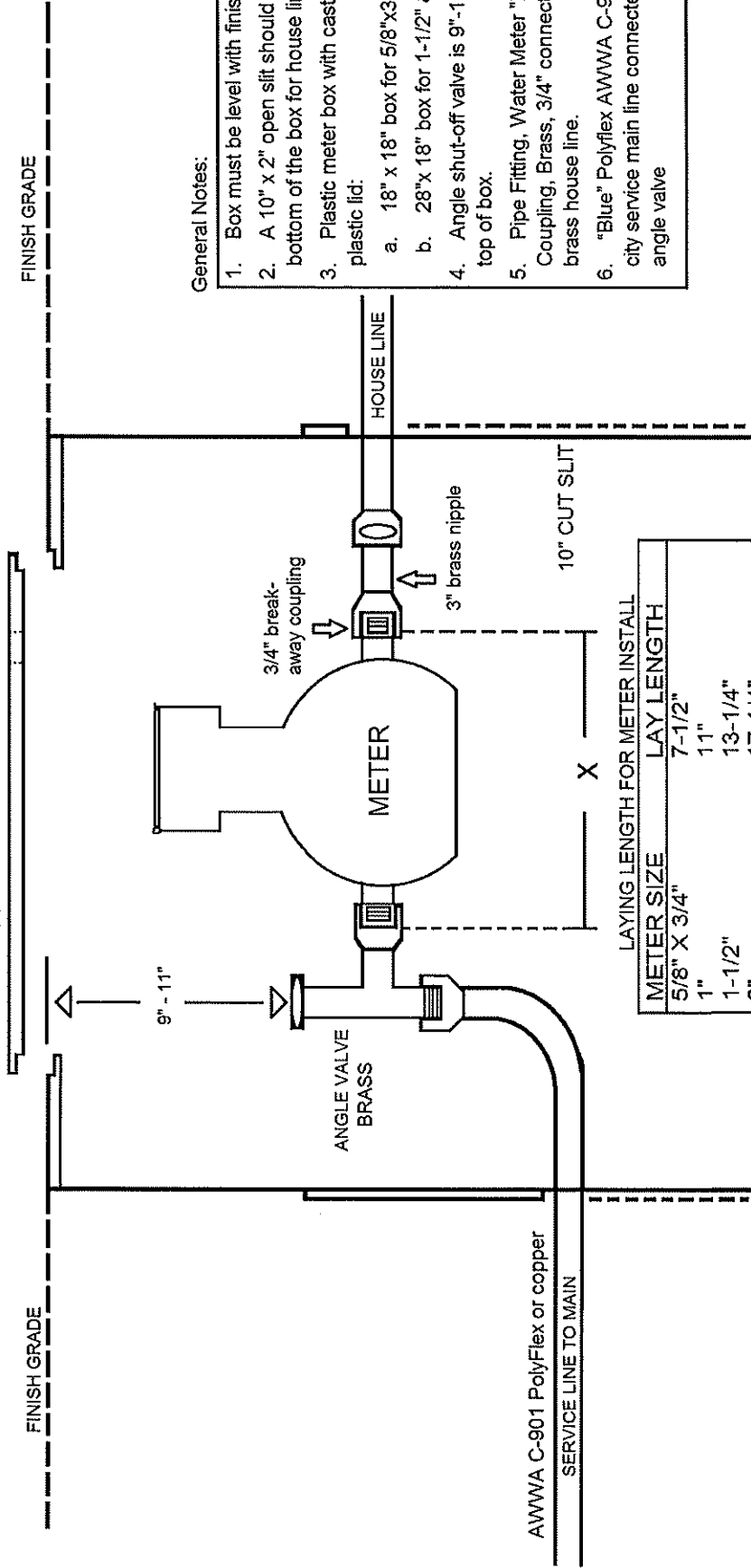
Water Meter Housing Water Meter Specifications
For Final Acceptance and Building Final Inspections

METER NEW SET LINE: (972) 237-8380

LIST OF RECOMMENDED SUPPLIERS:

ACT Supply	(713) 937-0600	www.actpipe.com
Hughes Supply	(817) 589-7244	
D & W Utilities Supply	(817) 589-7244	
Ferguson Water Works	(817) 267-3900	www.ferguson.com
Bass & Hayes	(972) 263-1360	www.basshays.com

PLASTIC LID:
BASS & HAYES model: #3LIDP
Iron approved AMR device kit



General Notes:

- Box must be level with finish grade.
- A 10" x 2" open slit should be cut to the bottom of the box for house line plastic lid:
 - 18" x 18" box for 5/8"x3/4" & 1" meters.
 - 28"x 18" box for 1-1/2" & 2" meters
- Plastic meter box with cast iron ring and plastic lid:
 - 18" x 18" box for 5/8"x3/4" & 1" meters.
 - 28"x 18" box for 1-1/2" & 2" meters
- Angle shut-off valve is 9"-11" depth from top of box.
- Pipe Fitting, Water Meter "break-away" Coupling, Brass, 3/4" connected to PVC or brass house line.
- "Blue" Polyflex AWWA C-901 or copper city service main line connected to brass angle valve

LAYING LENGTH FOR METER INSTALL

METER SIZE	LAY LENGTH
5/8" X 3/4"	7-1/2"
1"	11"
1-1/2"	13-1/4"
2"	17-1/4"