

GARDENING CLASSES AT MAIN LIBRARY

Stay warm while preparing for spring gardening this winter. All classes are 6:30-8 p.m. at the Main Library, 901 Conover Dr. For more information call 972-237-8102 or 972-237-8061.



Tuesday, Jan. 15: Soil, Can You Dig It?—Marilyn Simmons, Garden Inspirations

Tuesday, Jan. 22: Spring into Vegetable Gardening—Susan Henson, City of Grand Prairie Horticulturist

Tuesday, Jan. 29: Organics 101—Susan Henson, City of Grand Prairie Horticulturist

Tuesday, Feb. 5: Drought Resistant Plants—Laura Miller, Tarrant County Extension Agent and Horticulturist

Tuesday, Feb. 12: Square Foot Gardening—Julie Whitis, Essentials for Enduring Health

Tuesday, March 5: Going Native—Carol Feldman Design & Associates

Tuesday, March 12: Buddies in the Garden - Companion Planting—Susan Henson, City of Grand Prairie Horticulturist

Tuesday, March 19: Good Bug, Bad Bug—Tammy Chan, KGPB

DEADLINE TO FILE FOR PLACE ON BALLOT

Applications for a place on the May 11, 2013, City of Grand Prairie regular election ballot may be filed between Jan. 30, 2013, and March 1, 2013, at the office of the City Secretary at 317 College Street, Grand Prairie, Texas 75050. The following offices have terms expiring:

- Mayor (three-year term)
- Council Member, District 2 (three-year term)
- Council Member, District 4 (three-year term)

If you have questions regarding the May 11, 2013, city election, please contact Cathy DiMaggio, City Secretary, at 972-237-8039.

More information on the city election can be found in the next few months on the city's website at www.gptx.org.

FREE FINANCIAL EDUCATION WORKSHOP



Sundays, Feb. 3, Feb. 10, Feb. 17, Feb. 24
2-5 p.m.

Main Library, 901 Conover Dr.

Learn how to reduce your debt, rebuild your credit, set financial goals, save and plan for the future

Sponsored by the YWCA of Metropolitan Dallas

For information call 214-584-2335. To register email fe@ywcadallas.org

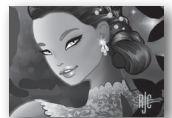
16TH ANNUAL DADDY DAUGHTER DANCE

Friday, Feb. 8, 6-10 p.m. • Ruthe Jackson Center, 3113 S. Carrier Parkway

This princess themed evening with dinner and dancing will surely be an event your daughter will remember for a lifetime. All daughters will receive a memorable gift. Doors open at 6 p.m. and the dance will conclude at 10 p.m. A professional photographer will be available for an additional fee. This event sells out every year, so make your reservations today! Cost is \$40 per couple and \$15 for each additional daughter. Limo rides are \$10 per person for a 15-minute ride. For tickets and more information call 972-264-6890.



BRIDAL SHOW



Tuesday, Feb. 26
5:30 - 8:30 p.m.

The Ruthe Jackson Center
3113 S. Carrier Parkway

Join us at the Ruthe Jackson Center for a "A Midsummer Night's Dream!"

- Tastings, trends and tablescapes by wedding experts
- Planning and design resources
- Entertainment showcase
- Stunning catwalk show featuring the latest in bridal fashion

No guests admitted under 16.
Reservation required.

Complimentary Admittance.
Reservations accepted
beginning Feb. 1: 972-237-7500.

ARTS COUNCIL SEASON TICKETS AVAILABLE

Buy a season ticket package for the best value. Four great shows for the price of three!

Greater Tuna

March 15-17 and 22-24

There's no place like home, and in Tuna, Texas, the Lion's Club is too liberal and Patsy Cline never dies. Two actors playing 20 classic characters create a world where it's OK to laugh at the people we love.

Grease

June 14-16 and 21-23

Here is Rydell High's senior class of 1959: head "greaser" Danny Zuko and new (good) girl Sandy Dumbrowski try to relive the romance of their "Summer Nights," and the rest of the gang sings and dances its way through the classic songs of the 1950s.

Little Shop of Horrors

October 18-20 and 25-27 RATED PG-13

This affectionate spoof of 1950s sci-fi movies features a down-and-out skid row floral assistant who becomes an overnight sensation when he discovers an exotic plant with a mysterious craving for fresh blood.

Annie

December 6-8 and 13-15

Leapin' Lizards! The popular comic strip heroine takes center stage in one of the world's best-loved musicals. Little orphan Annie is determined to find her parents, who abandoned her years ago. She finds a new home and family in billionaire Oliver Warbucks, Grace Farrell, and a lovable mutt named Sandy.

Season ticket packages are available at three price levels: \$34, \$52, \$67 for all four shows. Pick your price level, seat and performance day. Buy a season ticket package for the best value. Four great shows for the price of three!

Purchase your package online: www.artsgp.com or call the Uptown Theater Box Office: 972-237-8786.



FREE TAX HELP

Volunteers from AARP will provide free tax assistance to low-income and elderly residents.

Mondays and Wednesdays
Feb. 4 - April 15 • 11 a.m.-3 p.m.

Main Library, 901 Conover Dr.

Please bring last year's tax return, as well as any 1099s and W-2s.

For more information
call 972-237-5700 or
visit www.gptx.org/library

LYNN CREEK PARK OPENS MARCH 1

Lynn Creek Park, 5700 Lake Ridge Parkway, opens for the season on March 1. Hours of operation are 6 a.m.-10 p.m. Lynn Creek Park has more than 100 individual picnic pavilions, a playground, swimming beach, boat ramps, sand volleyball, and plenty of open space to toss the football. Single vehicle admission is free for Grand Prairie residents excluding select holidays and special events. Call 817-467-2104 for more information or visit www.GrandFunGP.com.

CELEBRATE TEXAS PUBLIC SCHOOLS

Thursday, Feb. 21 • 7:30-9 p.m.
Mansfield Center for the Performing Arts, 1110 W. Debbie Lane
Featuring GPISD, AISD,
Mansfield ISD performers.
Call 817-299-6369 for information.



GRAND PRAIRIE MEMORIAL GARDENS
And Mausoleum

For a limited time, get a 10% discount on all pre-need items.

3001 S. Belt Line Road
Offer expires Jan. 31, 2013. Call 972-237-3001 for more details or visit GrandPrairieMemorialGardens.com.

CABIN SPECIALS FOR VALENTINE'S DAY

Impress that special someone with a romantic stay at the Loyd Park Cabins. Set on the edge of Joe Pool Lake, the cabins come fully stocked with kitchen utensils, bed linens and towels. Relax on the front porch or snuggle around a campfire and make this Valentine's Day a memorable one!

SPECIAL OFFER:

Buy One Night – Get One Free

This romantic package includes flowers and chocolate placed in your cabin upon arrival.

*Reservations must be for at least two consecutive nights. One of the nights must be Thursday, Feb. 14. Call 817-467-2104 for reservations and mention this advertisement. Special is not available through online reservations.

Visit GrandFunGP.com/LakeParks for more info.

THANK YOU TO GP UNITED CHARITIES

United Charities is the cat's meow for their generous donation of many cat toys to the Prairie Paws Adoption Center in December. Thank you!

UNITY COALITION BANQUET FEB. 7

The community is cordially invited to attend the 8th Annual Grand Prairie Unity Coalition Banquet on Thursday, Feb. 7, 7-9 p.m. at the Ruthe Jackson Center, 3113 S. Carrier Parkway. The Grand Prairie Unity Coalition's goal is to champion the cause of unity and inclusiveness throughout our community. This year's theme is "United for the Planet." The evening will include great food and fellowship. The keynote speaker will be Grand Prairie Police Chief Steve Dye. Winners of the Annual Unity Student Art Contest will be recognized. Individual tickets are \$15 each and table sponsorships are available. To make reservations or sponsor a table, contact Gwen Massey at 214-546-1935 or email gm0019@att.net.

STUDENT ART CONTEST CALL FOR ENTRIES

Students throughout Grand Prairie are invited to submit a piece of original artwork. This year's theme is "United for the Planet." Contest groups will include elementary, middle school and high school. 1st, 2nd and 3rd place ribbons and prizes will be awarded. Entry is free.

The art show is part of the Grand Prairie Unity Coalition's Annual Unity Banquet, and will be exhibited on Feb. 7, 2013 during the banquet at the Ruthe Jackson Center, 3113 S. Carrier Parkway.

For official rules and an entry brochure contact the Grand Prairie Arts Council at 972-642-ARTS or email gpac@artsgp.com.

VALENTINE'S DAY DANCE AT THE SUMMIT

Thursday, Feb. 14, 7-9:30 p.m. • The Summit, 2975 Esplanade

\$20 in advance, \$25 at the door • Call 972-237-4141 for information

HOUSEHOLD HAZ WASTE COLLECTION

Unused, leftover, or expired medications should NOT be put down the drain or in the trash. The best way to dispose of non-narcotic medications is to take them to a household hazardous waste collection event. To dispose of narcotics, contact your hospital or pharmacy. The Grand Prairie Police Department also accepts expired narcotics and can be reached at 972-237-8811. If you need to dispose of needles, you should place them in a **sealed, puncture-proof** container and place them in the trash. **Needles and narcotics are not accepted at household hazardous waste collection events.**



The next collection events will be on **Saturday, March 2, 2013 and April 6, 2013**, from 9-11a.m. at the Development Center located at 206 West Church Street (next to City Hall). **Registration is required.** You may register on-line at www.gptx.org/WQ/HHW or by calling 972-237-8055. In addition to medications, residents can bring household and automotive batteries, motor oil, cooking oil, paint, aerosol cans, fluorescent bulbs, and household, landscape, and pool chemicals. Items **not accepted** include explosives, gas cylinders, fireworks, medical waste, radioactive materials, and municipal trash. **No commercial waste** is accepted.

FERAL CATS IN YOUR NEIGHBORHOOD

Be a part of the solution, not the problem. Have your cat spayed or neutered. Contact the Prairie Paws Animal Adoption Center, 2222 Warrior Trail, regarding low-cost spay/neuter programs, 972-237-8575.

FLOOD AWARENESS

The City of Grand Prairie is dedicated to minimizing the loss of life



and property that is associated with flooding events. Education and prevention are valuable and proven tools that help communities become resistant to these natural disasters. The City of Grand Prairie recognizes that its entire community is susceptible to flooding, not just those structures located within Special Flood Hazard Areas (SFHA's). The following information has been provided to help inform property owners located within the SFHA, flood prone areas and also all property owners within the City of Grand Prairie.

Flood Hazard

The City of Grand Prairie has 12 major watersheds. Each of these watersheds has areas that are subject to flooding, both from rising stream waters and localized street and yard flooding. Areas of historical flooding include parts of East Jefferson Street (Willow Bend Mobile Home Park, Sunset Golf Course, etc.), Carrier Parkway by Mcfalls Park, Fish Creek at Interstate 20, and the Trinity River Corridor. Stream flooding areas have been mapped by the Federal Emergency Management Agency (FEMA); however, localized street flooding has not been mapped. Your property may have never been flooded or may be shown on the FEMA maps to be outside the mapped limits of flooding.

However, most areas of the City have yet to see the record 100-Year (1%) storm event, and there is no guarantee that your property will never flood. Statistics show that the 100-Year (1%) storm event has approximately a 30% chance of occurring over a 30-year mortgage period.

2012 By the Numbers

Demographics

Land Area	81 sq. miles
Population	175,960
Median Age	32.3
Median Household Income	\$49,929

Development

New Single Family Building Permits Issued	324
Value of Average Single Family Permit	\$226,770
New Commercial/Industrial Square Feet	350,727

Top Taxpayers

Bell Helicopter Textron Inc.
Oncor Electric Delivery
Republic Beverage
Poly America LP
Lockheed Martin Missiles and Fire Control
Duke Realty Ltd. Ps.
Catellus Development Corp.
Mars Partners Ltd.
Cardinal Health
Walmart

Municipal Employees

Police/Fire Civil Service	422
General Employees	686
Seasonal/Part-Time	107
Crossing Guards	73

Libraries

Main Library Total Collection	165,925
Warmack Branch Total Collection	52,640
Bowles Branch Total Collection	10,300

Property Tax Rates

(Per \$100 Assessed Property Value)	
City of Grand Prairie	\$.669998
Grand Prairie ISD	\$1.46500
Arlington ISD	\$1.301
Cedar Hill ISD	\$1.440
Mansfield ISD	\$1.540
Dallas County	\$0.643412
Tarrant County	\$0.640867

Retail Sales Tax Rates

City	1.00000
AirHogs Ballpark	0.12500
Active Adult Center	0.12500
Parks Improvements	0.25000
Street Improvements	0.25000
Crime Control District	0.25000
State	6.25%
Total Sales Tax	8.25%

Grand Prairie's Top Employers

Grand Prairie ISD	3,300
Lockheed Martin Missiles and Fire Control	2,800
Poly-America	2,000
Bell Helicopter-Textron	1,200
City of Grand Prairie	1,100
Lone Star Park at Grand Prairie	1,000
Triumph Aerostructures – Vought Aircraft Division	950
Hanson Pipe & Products, Inc.	700
Republic National Distributing	700
Walmart	600
American Europter	600
Siemens Energy & Automation, Inc.	500

Operating Budget (2012-2013)

(Total appropriations and reserves)	
General Fund	\$103,500,000
Water/Wastewater	\$61,723,717
Other	\$57,060,584
TOTAL	\$222,284,301

Parks and Recreation

Acres of Park Land	5,013.78
Number of Parksites	58
Rounds of Golf Played	79,938
Ruthe Jackson Center Events	1,313
The Summit Members Special Events Attendees	4,868
Cemetery Spaces Sold	178,250
	257

Utilities

Water Production	25.6 million gallons per day
Fire Hydrants	7,300
Miles of Water Lines	783
Miles of Collection Line	761
Customer Accounts	45,455

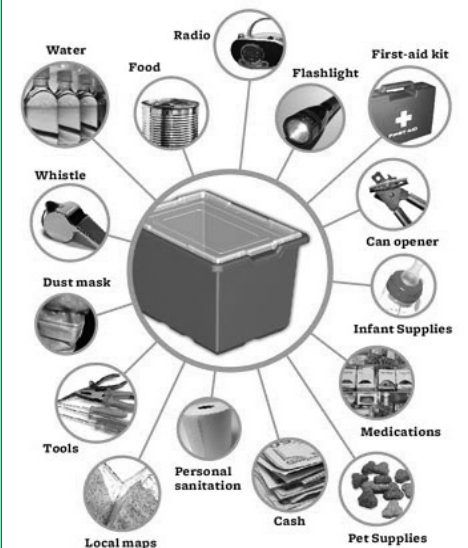
Solid Waste

Tons of Garbage Disposed	164,031
Tons of Commercial Recycling (at landfill)	41,886
Tons of Residential Recycling at the Landfill	4,229
at the Curb	3,965
at Drop Sites	888

Transportation

Municipal Airport Takeoffs/Landings	66,520
Grand Connection Bus Passengers	49,607

ARE YOU PREPARED FOR AN EMERGENCY?



A disaster supply kit is simply a collection of basic items that your household may need in the event of an emergency or disaster. For information about emergency preparedness, please contact the Office of Emergency Management, 972-237-7595, thunter@gptx.org, www.gptx.org/disasters.