

**PRAIRIE LIGHTS DRIVE THRU HOLIDAY DISPLAY**

Nov. 26-Dec. 31  
Lynn Creek Park on Joe Pool Lake



Opening Thanksgiving night, Prairie Lights is back and brighter than ever! With more than 4 million lights along a two-mile route and the brand new light show and lighted walk-thru experiences at Holiday Village, this event is one that you won't forget. And, you'll love Texas' largest lighted tunnel as the grand finale. The first-ever sneak-a-peek 5K run is Sunday, Nov. 22. Go to [www.prairielight.org](http://www.prairielight.org) for more information or call 972-237-GLOW.

**Prairie Lights 2009**

This Coupon is good for \$2 off admission at Prairie Lights



Lynn Creek Park on Joe Pool Lake Visit [www.prairielight.org](http://www.prairielight.org)  
Valid Monday-Thursday, excludes holidays or call 972-237-GLOW

One coupon per vehicle, expires December 30, 2009

**WINTER WONDERLAND AT LYNN CREEK PARK**

Saturday, Dec. 5  
Noon – 4 p.m.

Lynn Creek Park on Joe Pool Lake  
Free Admission

Highlighting the family fun activities at this popular holiday event will be the Grand Prairie ISD fine arts chorus, orchestral and dance performances. The holiday mood will be set with free barrel train rides, face painters, balloon artists, bounce houses, and festival foods available for purchase. Of course, Santa Claus will make a special appearance at Winter Wonderland. For more information call 972-237-8100 or visit [www.GrandFunGP.com/SpecialEvents](http://www.GrandFunGP.com/SpecialEvents).

**A ROCKAPELLA HOLIDAY AT THE UPTOWN**

Dec. 4-5 at 8 p.m. • Uptown Theater, 120 E. Main St.



Celebrate the season with "A Rockapella Holiday" concert spreading the joy of the holiday season through their music. USA Today puts it simply, "Some say the best instrument of all is the human voice. If you've seen Rockapella you know that's the truth." Often imitated, never duplicated, Rockapella remains an innovative burst of talent continuing to sell out venues around the world. Purchase your tickets online at [www.UptownTheaterGP.com](http://www.UptownTheaterGP.com) or call 972-237-UPTN.

**RING IN THE NEW YEAR IN STYLE... REDNECK STYLE**

That's right, our friends from the trailer park are coming home to Grand Prairie to help us ring in the New Year with an all new show. 3 Redneck Tenors: Broadway Bound premieres at your Uptown Theater on Thursday, Dec. 31, 2009 at 8 p.m. Stay after



the show and rock and roll your way into 2010 with the Redneck Tenors as we dance and sing along with them and their band in

the Studio Theater. Fun and surprises abound throughout the night – tickets on sale now at [www.UptownTheaterGP.com](http://www.UptownTheaterGP.com) or 972-237-UPTN.

**ROCKETTES CELEBRATE HOLIDAYS AT NOKIA**

Dec. 10-30 Visit [www.NokiaTheatreDFW.com](http://www.NokiaTheatreDFW.com) for showtimes.  
NOKIA Theatre, 1001 Performance Place

The Radio City Christmas Spectacular, starring the world famous Radio City Rockettes, features the Rockettes signature eye-high kicks and precision choreography. Bring your entire family! Audiences of all ages will delight in this multifaceted spectacular. For tickets call 214-373-8000 or 972-647-5700 or visit [www.NokiatheatreDFW.com](http://www.NokiatheatreDFW.com)



## CHRISTMAS EARLY BIRD SAVINGS!

The new Grand Prairie active adult center is currently pre-selling memberships with a big bonus in advance of the much anticipated facility's grand opening in early summer 2010. The 60,000-square-foot activity center targets active adults age 50+ and offers:

- Café • Fitness area • Classrooms • Group exercise room
- Indoor walking track • 100-seat movie theater • Locker rooms with saunas
- Banquet rooms with full kitchen • Gym for basketball and volleyball
- Outdoor covered patio overlooking lake with grill and fireplace
- Indoor swimming pool with lap lanes, exercise vortex, hot tub

The center is located at SH 161 and Warrior Trail in the also-under-construction new 172-acre Central Park. **Residents** who buy a one year membership early get two extra months added to their annual membership:

Age	Annual	Early Member Bonus
65+	\$50/year	two FREE months added to annual membership
50-64	\$200/year	two FREE months added to annual membership



What a great Christmas present for the active adult in your family! To purchase, visit the Senior Center, 925 Conover Dr., 972-264-4975, or go online to [www.grandfungp.com](http://www.grandfungp.com) and click on the Buy Early/Save Big icon.

## HOUSEHOLD WASTE COLLECTION DAY DEC. 5

The city of Grand Prairie schedules household hazardous waste (HHW) collection events to make it easier for residents to properly dispose of their waste. Although these events are free to residents, there is a cost to provide this service. The city is charged a fee for every household that brings waste to a collection event or to the Environmental Collection Center in Fort Worth.



Residents are encouraged to participate in HHW events to dispose of existing waste. We accept household and automotive batteries, pharmaceuticals, motor oil, cooking oil, paint, aerosol cans, fluorescent bulbs, and household, landscape, and pool chemicals. We do not accept explosives, gas cylinders, fireworks, medical waste, radioactive materials, or municipal trash.

No commercial waste will be accepted.

The next Household Hazardous Waste collection event will be held on **Saturday, December 5, 2009** from 9-11 a.m. at the Development Center, 201 NW 2nd Street (next to City Hall).

**Registration is required.** Register by calling 972-237-8055 or on-line at [www.gptx.org/WQ/HHW](http://www.gptx.org/WQ/HHW).

## COPELAND HOME TOUR

Tour the city's beautifully restored historic home free on Saturday, Dec. 5, from noon-4 p.m. Historical Commission members will offer tours and answer questions about the quaint 100-year-old Copeland Home. The home is located on 125 SW Dallas St. From Main or Jefferson Streets in Grand Prairie, turn south on SW 2nd Street and east on SW Dallas Street.



## GARBAGE COLLECTION

Garbage and recyclables will not be collected on:

**Thanksgiving Day**  
Thursday, Nov. 26

**Christmas Day**  
Friday, Dec. 25

**New Year's Day**  
Friday, Jan. 1

There will be no makeup day. Please put your garbage and recycling out on your next scheduled collection day.

The landfill will be closed on Thursday, Nov. 26, Friday, Dec. 25, and Friday, Jan. 1, and will close at 3 p.m. on Dec. 24 and 31.



## INDUSTRIAL REAL ESTATE UPDATE

**Farley's & Sathers Candy Company**, one of the world's top 25 candy makers signed a lease for a 1.06 million-square-foot warehouse in Grand Prairie in January.

Disposable-products supplier **Solo Cup Co.** signed a 10-year lease on a 603,354-square-foot distribution center off State Highway 161.

Crow Holdings partnered with the city and rolled out a deal for **Discount Tire Distribution Center** to move into a 305,000-square-foot building at 3254 Trinity Boulevard.

**Lady Primrose**, a high-end cosmetics manufacturer, has come to town, signing a lease to relocate its distribution and packaging operations from Dallas to a newly built warehouse/distribution center off Roy Orr in Grand Prairie. After a six month search, including touring 12 other locations in the DFW area, Lady Primrose chose the Grand Prairie site in the Crosspoint development owned by Duke Realty.



## Dallas County

Free Discount Rx Card

Save on Diagnostic Image Testing and Medical Lab Testing

### For all Individuals and Families in Grand Prairie - all Counties

Everyone Qualifies!

### Easy to Use!

Simply present this ready-to-use card at any participating pharmacy and you'll save up to 65% on your prescriptions. No paperwork to fill out, no limits on usage and there are not health condition restrictions—everyone is accepted immediately! No fee is ever charged for this card! It's a benefit provided by Dallas County and participating pharmacies to help people save on their prescriptions.

You'll save on brand name drugs, generic drugs and on drugs not covered in other plans.

To locate a participating pharmacy, for drug prices, to print a card or for more information please visit [www.coast2coastrx.com/dallastx](http://www.coast2coastrx.com/dallastx) or call 1-800-931-8872.

For discounts on lab and imaging tests call:

**1-800-903-3921** or visit  
**[www.prepaidlab.com](http://www.prepaidlab.com)** or  
**[www.prepaidimaging.com](http://www.prepaidimaging.com)**

Cut off this card and start saving!



### Coast to Coast Rx Card

Name \_\_\_\_\_  
Member ID: G00576921  
Processor NetCard Systems/RxWest  
Bin#: 008878  
Group#: Dallas  
Coverage: Individual and Family  
This Plan is NOT Insurance  
  
OBM is WellDyneRx



## CITY HOLIDAY ORNAMENT SOARS

The city's annual custom-designed 2009 city of Grand Prairie holiday ornament, which embraces the city's 100<sup>th</sup> year of incorporation this year, is now available. First Lady Janice England created the ornament project as a way to celebrate Grand Prairie. Revenues benefit local charities. Ornaments retail at \$15 each and may be purchased at:

### City Hall, Marketing Department

317 College St.  
Mon-Fri 8 a.m.-5 p.m.

### Tourist Center

2170 N. Belt Line Road  
Mon-Sat 9 a.m.-5 p.m.  
Sun 1-5 p.m.



Ornaments from previous years are also available. For more information call 972-237-8086.

## WHAT IS A WATERSHED AND WHY SHOULD I CARE?

*No matter where you are on this earth, be it in Grand Prairie or Beijing, you are in a watershed.* A watershed is an area of land where all of the water under or on top of the land goes to the same place – this includes water located underground and water that flows on the surface. Generally, a ridge or elevated point separates one watershed from another.

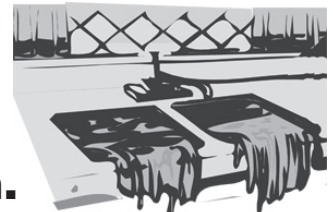
Watersheds are the places we call home, where we work and where we play. What you and others do on the land impacts our quality of water and our other natural resources. When it



rains, water flows from rooftops, through lawns, over paved streets, sidewalks and parking lots, across bare soil, and eventually flows untreated into storm drains to our streams, rivers and lakes.

*So what's the big deal?* Not only do wildlife live in our streams, rivers and lakes, but City of Grand Prairie residents swim in and get their drinking water from these waterbodies. Good stewardship activities can help maintain and enhance a healthy watershed or restore an unhealthy one. For more information and tips on how to improve water quality, please visit [www.gptx.org/EnvironmentalQuality/Stormwater](http://www.gptx.org/EnvironmentalQuality/Stormwater).

**Don't clog  
the main.  
Keep grease  
from the drain.**



## NEW GP FACILITIES SET TO OPEN IN 2010

The city's new **public safety center** and **The adult activity center** will open in spring 2010 on SH 161 between Warrior Trail and Arkansas Lane. The exterior structures are mostly finished on both buildings and interior work is running at full throttle. Inside the public safety center, the four story administrative tower has been dried in, the air conditioning units are in and working, raised computer flooring has been installed, and interior walls and other finish work continues to progress. The western portion of the 60,000-square-foot adult activity center exterior is mostly complete and construction is in progress to close in the eastern portion. The pool shell has been installed and tested. Interior walls and finish work are in progress in the banquet rooms, theater, kitchen and office areas. Mechanical, electrical and plumbing work are ongoing throughout the building.

Concrete slabs are in place and steel framework is going up on the **Lake Parks Rescue Facility**, the replacement for the current Fire Station #7. The building is scheduled to open in July 2010.

**Market Square**, a new home for the city's farmers' market, on the corner of NW 2<sup>nd</sup> and Main streets is complete. The one-half acre park features six interior vehicle bays for sale of produce and other goods. A "pot belly" water tower sits on the corner



near the same location where a similar water tower stood in the early 1900s and acts as a directional beacon for those looking for Market Square.

## TREE LIGHTING CEREMONY

Decorated Christmas trees from 25 GPISD elementary schools will be on display at City Hall Plaza Dec. 3-18. The display will begin Thursday, Dec. 3, at 6:15 p.m. with a musical program featuring more than 400 students in choirs and orchestras. City officials will be on hand to throw the switch to light the giant city holiday tree at 6:45 p.m. Admission is free. The GPISD decorated trees will be donated to needy families on Dec. 18.

## CANDLE LIGHT MEMORIAL SERVICE

The public is welcome to attend the 6th Annual Candle Light Memorial Service Saturday, Dec. 5, at Grand Prairie Memorial Gardens, 3001 S. Beltline Road. Gather at 5 p.m., service begins at 5:30 p.m. This is a wonderful time to reflect with family members, enjoy each other's company and pay respect to those who have passed. Refreshments will be served. Call 972-237-3001 for



GRAND PRAIRIE MEMORIAL GARDENS  
*And Mausoleum*

## THE GRAND PRAIRIE ARTS COUNCIL PRESENTS MIRACLE ON 34TH STREET

Enjoy this Christmas Classic, including the original story and characters told in a fresh new way with all the beloved Christmas music and featuring a full orchestra.

**Uptown Theater, 120 E. Main St.**

Dec. 10-12, 17-19 • 8 p.m. Dec. 13, 20 • 2 p.m.

Purchase tickets online at [www.UptownTheaterGP.com](http://www.UptownTheaterGP.com)  
or call 972-237-UPTN.



## NATIVITY EXHIBIT

**Saturday, Dec. 12 • 11 a.m.-4 p.m.**

West Fork Presbyterian Church • 908 Santerre Dr.

Members of the West Fork Presbyterian Church will be celebrating Grand Prairie's 100<sup>th</sup> birthday with an exhibit of many nativity scenes. Admission is free.

## SANTA'S MAILBOX FOR MAIL TO NORTH POLE

Santa's Mailbox for mail that goes directly to the North Pole will be open Dec. 1-24 at City Hall Plaza. No postage stamps are needed for good little boys and girls who want to drop off their Christmas wish lists at this special mailing spot. Look for the brightly colored mailbox near the Water Department drive-thru lanes at City Hall (NW 4<sup>th</sup> Street and Church).

## GOLF FOR THE HOLIDAYS

Give the gift of golf for the holidays. Stop by your Grand Prairie Golf Courses, Prairie Lakes and Tangle Ridge, to get your Christmas shopping done early. Gift certificates can be purchased and used on lessons, green fees and pro-shop merchandise. Call or stop by:

Prairie Lakes Golf Course, 3202 SE 14th St., 972-263-0661

Tangle Ridge Golf Course, 818 Tangle Ridge Drive, 972-299-6837

