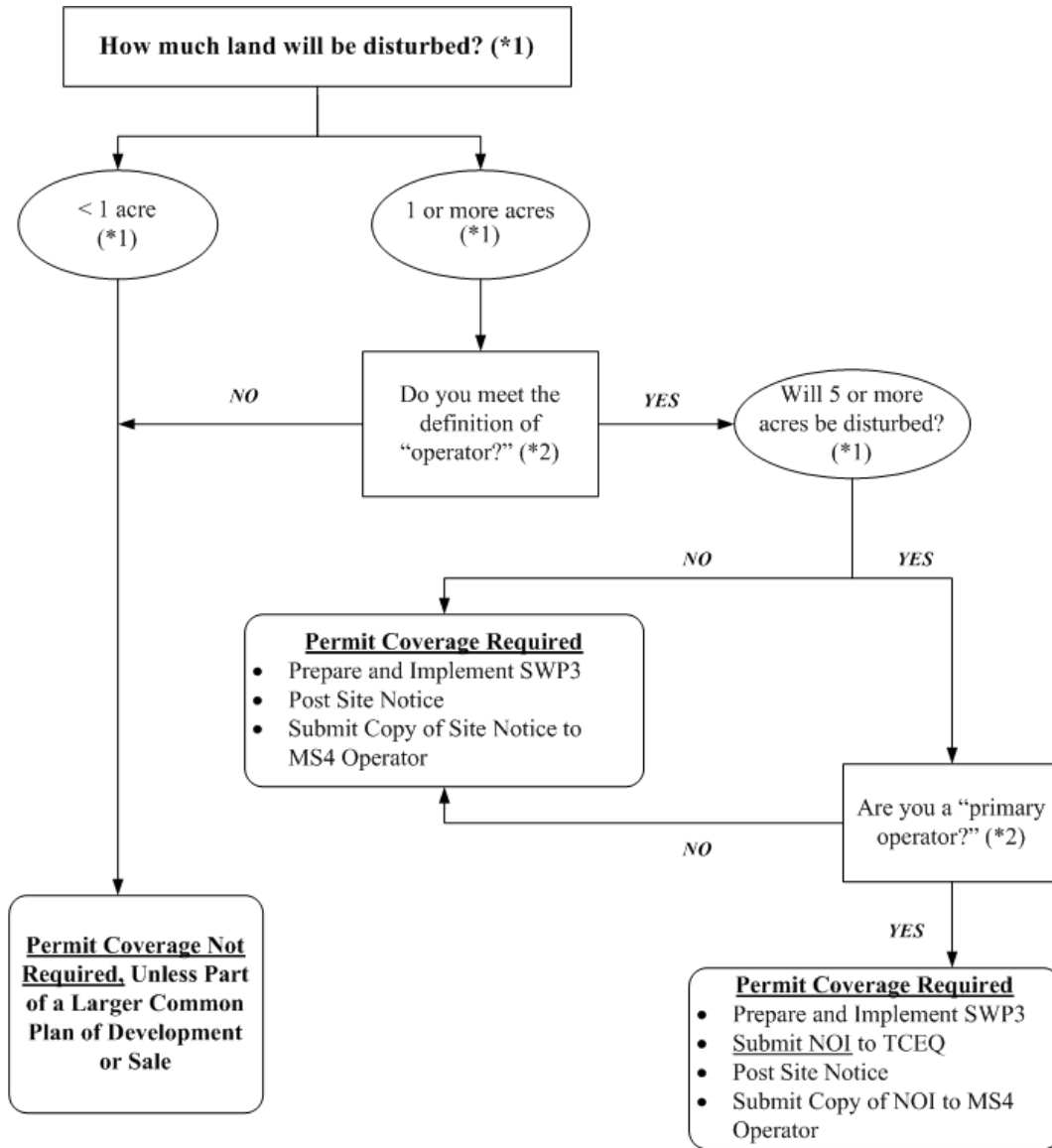


**Part I. Flow Chart and Definitions**

**Section A. Flow Chart to Determine Whether Coverage is Required**



(\*1) To determine the size of the construction project, use the size of the entire area to be disturbed, and include the size of the larger common plan of development or sale, if the project is part of a larger project (refer to Part I.B., "Definitions," for an explanation of "common plan of development or sale").

(\*2) Refer to the definitions for "operator," "primary operator," and "secondary operator" in Part I., Section B. of this permit.